

Background

Your *Mac OS X Server* can be setup to be a **Primary Domain Controller** to provide authentication for *Windows* clients.

Windows computers can be configured to join the domain, and mount the *Mac OS X* Users' **Home** Directory as G drive.

This is particularly useful in a mainly "Mac" school which also has a number of *Windows* computers on the network.

Note: This document assumes that you already have a functioning *Mac OS X Server*, functioning as an *Open Directory Master*. It is also assumed that there are no other *Windows* servers on your school network functioning as a *Primary Domain Controller*.

This document explains how to:

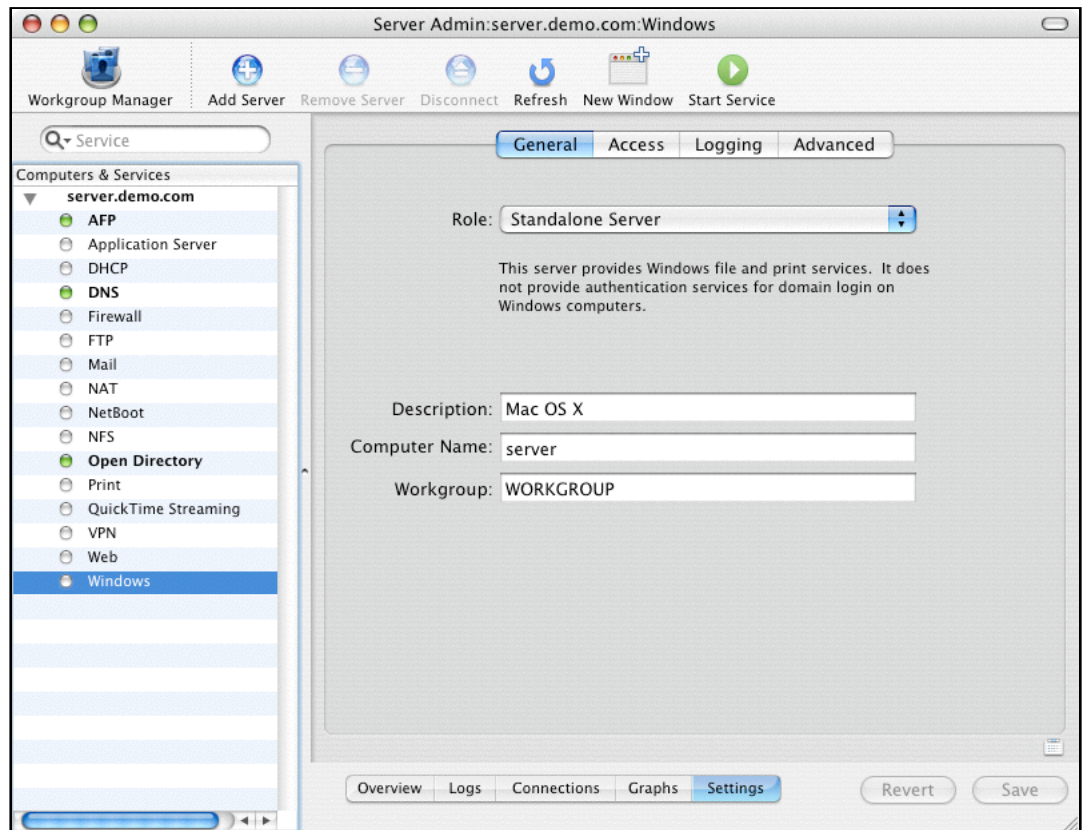
- Make your *Mac OS X Server* a domain controller;
- Set up a default profile on each *Windows* computer;
- Set *Windows* computers to logon to the *Mac OSX Server*.

This document is far from comprehensive, and covers only the basics!

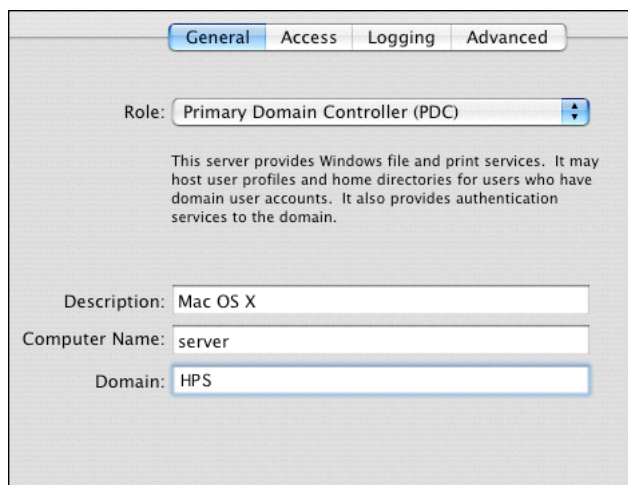
1. Configuring the *Mac OS X Server* - Server Admin

1.1. Open *Server Admin* and click on the **Windows** service.

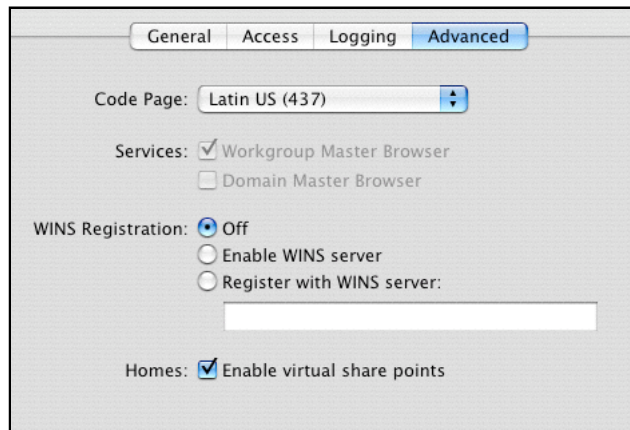
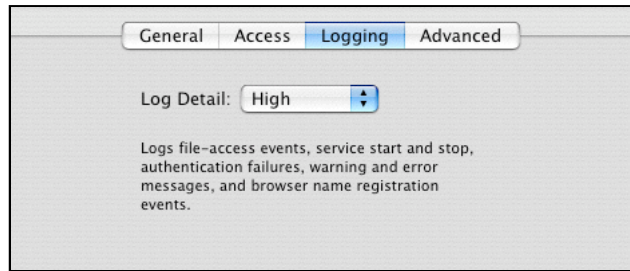
Click on the **Settings** button at the bottom of the window.



1.2. Click on the **Role** popup to change the role to be a **Primary Domain Controller (PDC)**.



- 1.3. Click on the **Logging** and **Advanced** buttons to confirm the following settings:



No changes should be necessary on these screens.

- 1.4. Click on the **Save** button.

You will be asked to enter an administrator's password.

2. Creating a Default User Profile in *Windows XP*

When a new user logs onto a *Windows XP* computer, they are assigned a “profile”.

This profile includes a number of default settings, including proxy address, default home page, etc.

Each *Windows XP* user who connects to the *Mac OS X server* is considered to be a “new user” by the local *Windows XP* computer, and is assigned the default user profile settings.

The notes below describe how to set the default user profile on an *XP* computer.

You will need to carry out this procedure on each *Windows* computer.

2.1. Log on to the computer as the **Administrator**, and then create a local user account.

2.2. Log off as the **Administrator**, and then log on to the computer through the local user account that you just created.

Caution: You will cause permissions issues if you create the custom user profile when you are logged on as the administrator.

2.3. Customise the profile appropriately. For example, set the default *Internet Explorer* Home Page, proxy server, printer, Desktop, Show My Computer.

2.4. Log off as the local user, and then log back on as the **Administrator**.

2.5. Because several of the files in the profile are hidden and must be copied to the new custom default user profile, turn on the **Show hidden files and folders** option:

- Double-click **My Computer**, click **Tools**, and then click **Folder Options**.
- Click on the **View** tab.
- Under **Advanced settings**, click **Show hidden files and folders**.
- Click on **OK**.

2.6. To replace the current default user profile with your new customised default user profile:

- Right click on **My Computer** and choose **Properties**.
- Click the **Advanced** tab.
- Under **User Profiles**, click **Settings**.
- In the **User Profiles** dialogue box, select the user profile that you just created, and then click **Copy To**.
- In the **Copy To** dialogue box, under **Copy profile to**, click **Browse**, click the **C:\Documents and Settings\Default User** folder, and then click **OK**.
- Under **Permitted to use**, click **Change**, click **Advanced**, click **Find Now**, select **Everyone** from the list, and then click **OK** (three times!).
- Accept the warning that you are about to replace the existing **Default User Profile**.
- Click **OK** two more times to close the **User Profile** dialogue boxes.

2.7. *Windows XP* will now assign the custom default user profile to any “new” user who logs on to the computer.

This includes the default home page and proxy server settings.

2.8. *Note: When users log on to their Mac OSX account from a Windows computer, they will need to click OK to a couple of warnings that the user’s profile cannot be saved.*

Each user can have a profile stored on the server, but the details of this procedure are beyond the scope of this document.

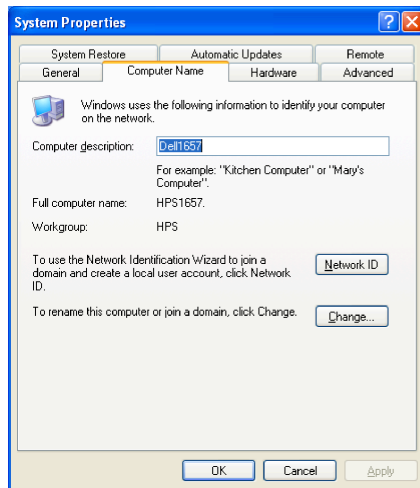
3. Setting up the Windows clients

You will need to set your client(s) to join the **Domain** you created on the server.

3.1. Right-click on **My Computer**.

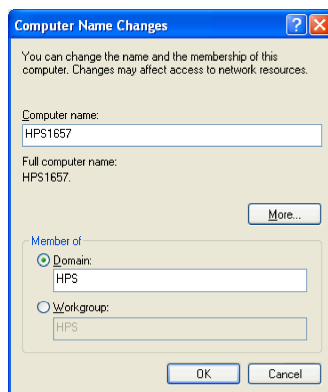
Choose **Properties**.

3.2. Click on the **Computer Name** tab



Click on the **Change** button.

3.3. Click on the **Domain** button, and enter the **Domain** name you setup on the server.



Check that the computer has a unique identifying name.

If necessary, change the name, then restart the computer *BEFORE* changing the computer from being a member of a **Workgroup** to a **Domain** member.

3.4. You will be asked for an *admin* name to join the **Domain**.

This is the *Administrator* of the *Mac OS X Server*.

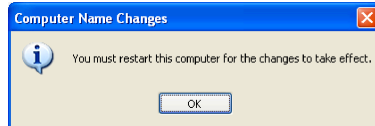


3.5. After a short delay you will be welcomed to the **Domain**.



Click on **OK**.

3.6. You will be reminded to restart the computer.



Click on the **OK** button to restart the computer.

3.7. After the restart, hold down the **control-alt-delete** key combination to see the login screen.

3.8. At the login screen, *Windows* gives you the option of logging into the **Domain** server, or the **Local** computer.

Click the **Options** button, then select the **Domain** from the popup menu.

3.9. Enter a **user name** and **password** for a user on the *Mac* server.

3.10. Open *My Computer* (from the *Desktop* or from the *Start* menu) to see the user's **Home** folder as mapped drive **G**.