

Adding a New Machine to a DNS Zone

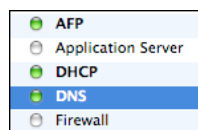
This document describes how to add a new address to an existing DNS zone, on a *Mac OS X 10.4 Server*.

Specifically, this document describes how to include an address for a school's internet web server, hosted on the DET network, but external to the school LAN.

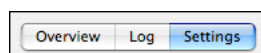
1. Working at a network computer, with the *OS X Server Administrator Tools* installed, launch *Server Admin* (located in the **Server** folder, in the **Applications** folder) and log on to your *OS X Server*.



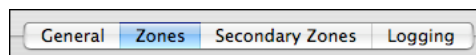
2. Select the **DNS** service from the left-hand pane of the *Server Admin* window.



3. Click on the **Settings** button at the bottom of the window.

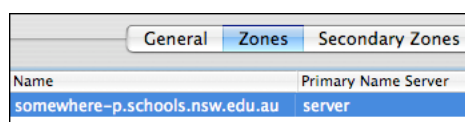


4. Click on the **Zones** button at the top of the window.

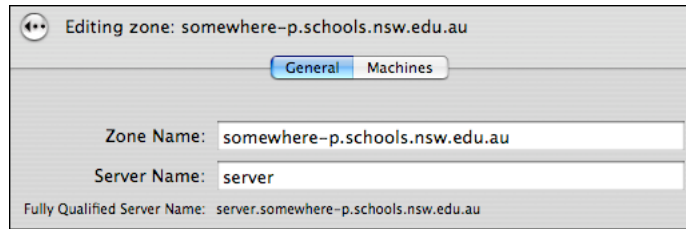


5. Double - click to select the zone name to which you are going to add a machine.

There is likely to be only one zone with the school domain name.



6. You will see the zone editing window.



7. Click on the **Machines** button.

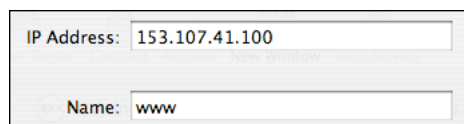
8. You will see the list of machines already recognised in the zone.

Name	Primary Address	Comment
server	192.168.1.27	file server
proxy	192.168.1.20	caching proxy
web1	192.168.1.30	student web server
cpc1	192.168.1.41	local content cache

9. Click on the **+** button to add a new machine to the list.



10. Enter the **IP address** of the computer, and the **Name** by which it will be identified in the zone. Click on **OK**.



The example above shows the info required to add your school's DET web server to the local zone information.

11. The new machine will now be added to the zone records.

Name	Primary Address	Comment
server	192.168.1.27	file server
proxy	192.168.1.20	caching proxy
web1	192.168.1.30	student web server
cpc1	192.168.1.41	local content cache
www	153.107.41.100	DET Web Server

12. Click on the **Save** button.

You should now be able to access your school's web site from within the school LAN.

Appendix - How to perform a Lookup

You can use a **Lookup** to determine the numeric IP address for a server identified by an alphabetical name.

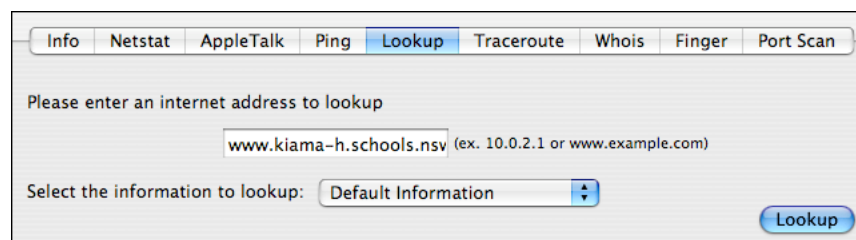
This will be useful to determine the IP address of the server that is hosting your school's web site (www.schoolname-p.schools.nsw.edu.au).

1. Launch *Network Utility* (**Applications > Utilities**).



2. Click on the **Lookup** tab at the top of the window.

Enter the name of the server whose fully qualified domain name (FQDN) that you want to resolve to an IP address.



3. Click on the **Lookup** button to display the information associated with the name that you have entered.

The IP address of the server hosting the web site will be displayed in the **Answer Section** of the Lookup information.

```
;; QUESTION SECTION:
;www.kiama-h.schools.nsw.edu.au.  IN  A

;; ANSWER SECTION:
www.kiama-h.schools.nsw.edu.au. 3600 IN CNAME srpx.det.nsw.edu.au.
srpx.det.nsw.edu.au. 3600 IN A 153.107.41.100
;; AUTHORITY SECTION:
det.nsw.edu.au. 3600 IN NS watt.det.nsw.edu.au.
det.nsw.edu.au. 3600 IN NS joule.det.nsw.edu.au.
```