

Configuring & Distributing *Firefox* Preferences

For schools who use network logins

These notes are written for schools where *Firefox* is the preferred browser to use when accessing the Internet, or a corporate network.

Firefox is a “3rd-party” web browser, and does not use the *Mac OS X* system preference settings to obtain a proxy server address.

This document describes the configuration of the *Firefox* web browser to access a corporate network, using the appropriate proxy server and other settings, and the subsequent process of distributing these *Firefox* preferences to each network user on a managed network.

Although your network computers may generally be accessed by network users, whose accounts and preferences are stored on the server, most network computers also have local (non-network) user accounts setup, as a “fall-back” in the case of a server failure.

Another document in this series describes the process for configuring *Firefox* preferences for local (non-network) users, so that multiple students can use the same generic account (ie “student”) if a network logon is unavailable.

This document is intended for use by school network/system administrators, and includes the following sections:

1. Updating *Firefox* to the latest version on one computer (if required);
2. Updating *Firefox* to the latest version on multiple computers (if required);
3. Configuring *Firefox* preferences for *one* managed network user;
4. Capturing *Firefox* preferences;
5. Distributing *Firefox* Preferences to *new* network users;
6. Distributing *Firefox* preferences to *existing* network users;
7. Setting *Firefox* as the default browser for managed network users;
8. Adding *Firefox* to the *Dock* for managed network users;

Please note: The information in this document is general in nature, and schools should check with their system administrators for specific details relating to their local situation.

1. Updating Firefox to the latest version on one computer

(If your computers already have a recent version of Firefox installed, skip straight to step 3).

1.1. Logon to a computer as the **Local Administrator**.

1.2. Download and install the latest version of *Firefox* from www.mozilla.com.

Firefox is installed by dragging the *Firefox* application to the **Applications** folder. (There is no “installer” for *Firefox*.)

1.3. Log off as the **Local Administrator**.

2. Updating Firefox to the latest version on multiple computers

If you are using *Netrestore* to distribute disk images to network computers, create a new image with the latest version of *Firefox* installed and configured for local users.

Distribute the new image to all computers using *Netrestore*.

If you are not using *Netrestore* to distribute disk images to network computers, you can use *Apple Remote Desktop* (ARD) to distribute *Firefox* to multiple network computers:

2.1. Logon to a computer as the **Local Administrator**.

This computer should have *Apple Remote Desktop* (ARD) administrator software installed.

2.2. Download and install the latest version of *Firefox* from www.mozilla.com.

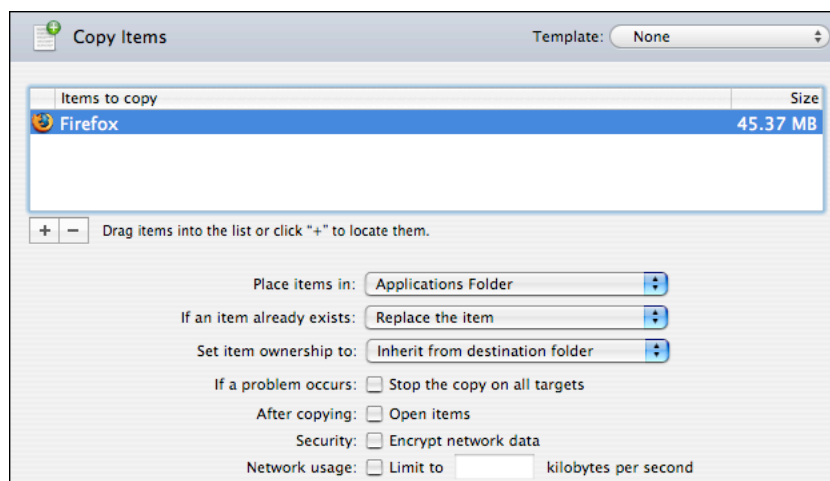
Firefox is installed by dragging the *Firefox* application to the **Applications** folder. (There is no “installer” for *Firefox*.)

2.3. Launch *ARD*.

2.4. Select the computers to which you want to copy *Firefox*.

2.5. Choose **Copy Items** from the **Manage** menu.

- 2.6. Select the *Firefox* application, then set the preferences for the copying process, as shown below.



- 2.7. Click on the **Copy** button.

(You may need to experiment to ascertain the most efficient number of computers that can be copied to at one time, depending on your network infrastructure).

- 2.8. When the copying process is complete, **Quit ARD** and log off as the **Local Administrator**.

3. Configuring Firefox preferences for a managed network user

3.1. Using *WorkGroup Manager*, create a completely new network user.

3.2. Log on to the network as the new network user.

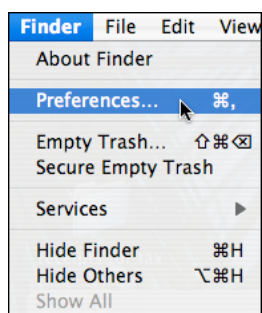
3.3. Launch *Firefox*.



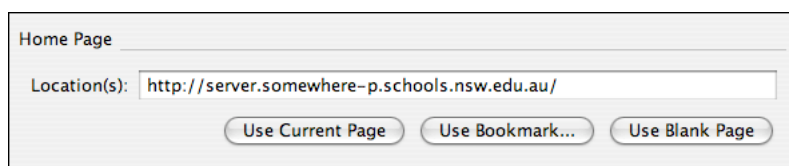
- Choose to **Don't import anything**.

- Choose to make *Firefox* your **default browser**.

3.4. Choose **Preferences** from the **File** menu.

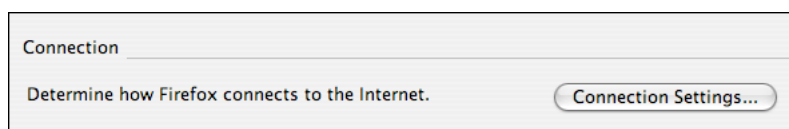


3.5. Enter the default **Home Page** address.



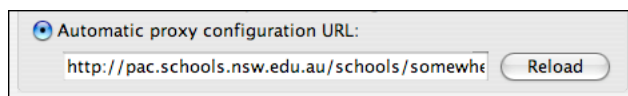
Ideally this should be your school's Intranet site, providing a gateway to relevant curriculum sites on the Internet

3.6. Click on the **Connection Settings** button.

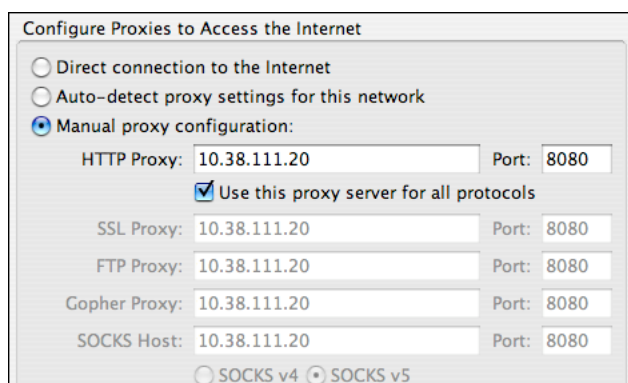


3.7. Enter your school's proxy server address.

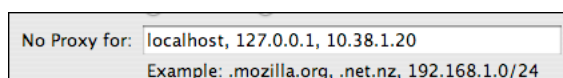
This proxy setting may vary from school to school. Ideally, use the school's **Automatic Proxy Configuration file** (PAC file).



Alternatively you may choose to use the address of the school's local proxy server, such as a *Sentral* server.



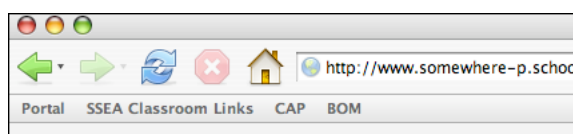
If using a *Sentral* server, also include an "exception", to bypass the proxy server when accessing the *Sentral* server (in this example - 10.38.1.20)



3.8. Close the **Firefox Preferences** window.

3.9. Visit some web sites on the Internet, some sites on the corporate Intranet, and sites on your school's Intranet, to check that the browser is correctly configured. (You may want to clear your **Firefox history** and **cache** after visiting these sites.)

3.10. You may also add some relevant **toolbar bookmarks** to the *Firefox* toolbar, as well as deleting the default bookmarks.



3.11. Quit *Firefox*.

4. Capturing Firefox Preferences

- 4.1. We need to “capture” (copy) the *Firefox* preferences from the new user, so that we can distribute the preferences to all users on the school network.
- 4.2. While logged on as the same new managed user (as in *Section 2*), go to your **Home** folder.



- 4.3. Navigate to the *Library > Application Support > Firefox* folder, in your **Home** folder.



- 4.4. Copy this folder to a shared drive on the server (eg in the **Groups** folder).
- 4.5. Log off from the workstation.

5. Distributing the Firefox preferences to new network users

- 5.1. Log on to the server as the **root** user.
- 5.2. Navigate to the shared folder where you copied the *Firefox* preferences folder in the previous (above).
- 5.3. Copy this folder to:
System > Library > User Template English.Iproj > Library > Application Support.

This is the “template” folder from which new users’ Home folders are created.

- 5.4. Close the open folders, and log off as the **root** user.
- 5.5. Now, when a new user is created, their *Firefox* preferences will be correctly configured to access the Internet.

6. Broadcasting Firefox preferences to existing network users.

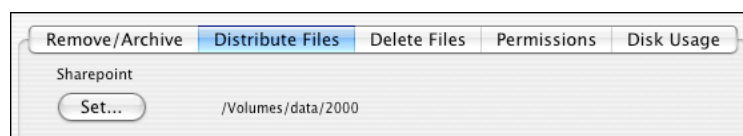
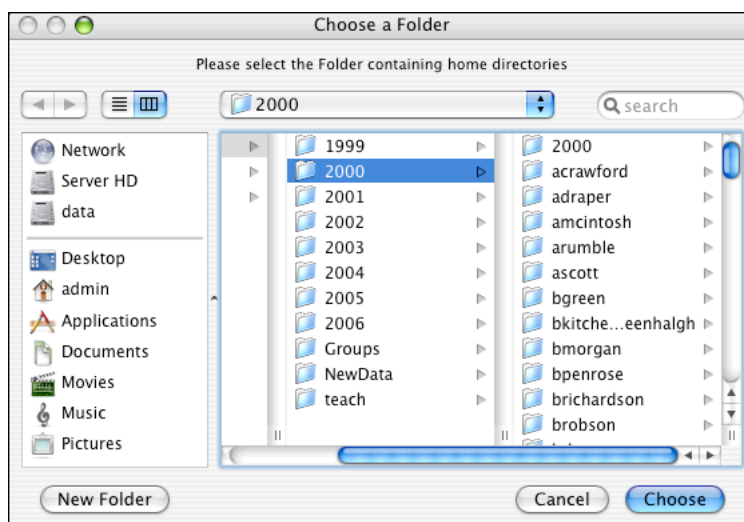
6.1. Working at the server window (via *Apple Remote Desktop*), download and install *Home Directory Helper* from homepage.mac.com/jacque/

6.2. Launch *Home Directory Helper*.

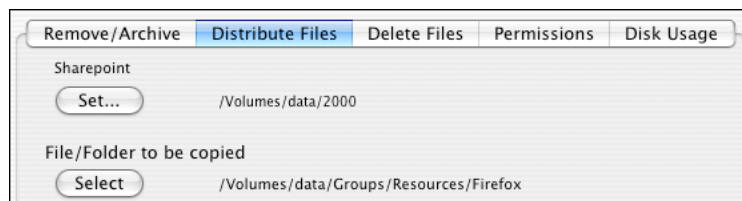
6.3. Click on the **Distribute Files** button.



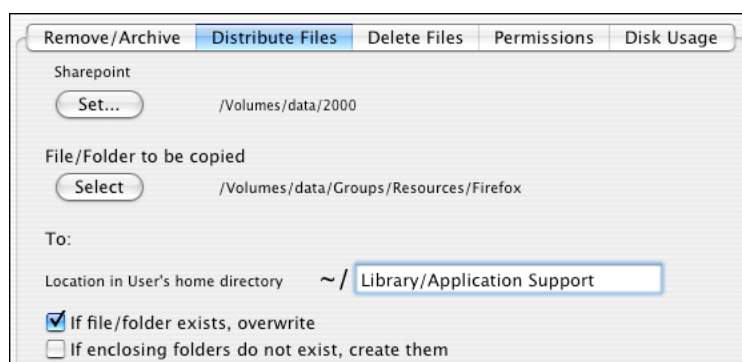
6.4. Click on the **Set** button to choose a sharepoint containing students' **Home** folders. (You can only distribute these preference files to one sharepoint - ie one year group - at a time).



- 6.5. Click on the **Select** button to navigate to the *Firefox* folder to be copied to users' **Home** folders. (We previously copied this to a shared folder)



- 6.6. Enter the location to which the *Firefox* preferences are to be copied within each users' **Home** folder (*Library/Application Support*).



Tick the box to **overwrite the folder, if the folder exists**.

- 6.7. Click on the authentication padlock, enter your password, then click the **Copy** button.
- 6.8. The **Copy** button will glow an aqua-blue colour, and will continue to glow aqua-blue, until the copying process is complete.

When the button stops glowing aqua-blue (which may be several minutes if there are lots of user folders), the preferences have been copied to each users' **Home** folder.

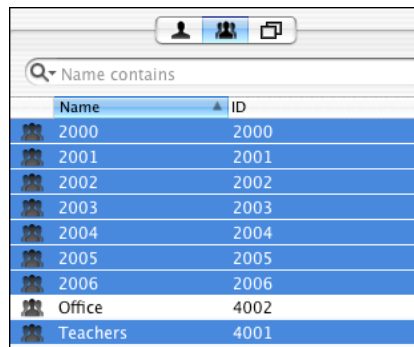
- 6.9. Repeat the process for each **Home** folder sharepoint.

Note: If you have *generic network users* (Kinder, Year 1, 2005, etc) you will need to logon to their account, and set the *Firefox* prefs in a similar way to the local (non-network) users - preventing the storing of passwords, forms, etc, for that user.

7. Setting Firefox as the default browser for managed network users.

- 7.1. Sitting at a network computer - not the actual server - launch *Workgroup Manager* (in the *Applications > Server* folder).
- 7.2. Log into *WorkGroup Manager (WGM)* as the directory administrator - using the *fully qualified domain name* of your server.
- 7.3. Click on the **Groups** button in the left pane.

Select all the main managed groups.



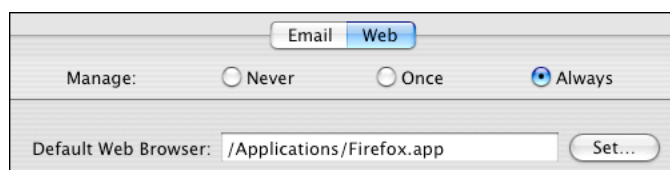
- 7.4. Click on the **Preferences** icon at the top of the *WGM* window.



- 7.5. Click on the **Internet** preference in the right pane of the *WGM* window.



- 7.6. Click on the **Web** button, then click on **Always**, then click on the **Set** button, and then navigate to the *Firefox* application in the **Applications** folder on the computer.



- 7.7. Click on the **Apply Now** button, and quit *WGM*.

8. Adding Firefox to the Dock for managed network users

8.1. Working at a network workstation, log in to a network account (preferably the account of a teacher who normally administers the server, though this is not critical.)

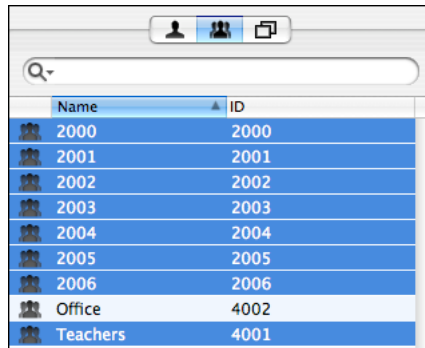
8.2. Launch *WorkGroup Manager*.



This has been installed in the **Applications > Server** folder.

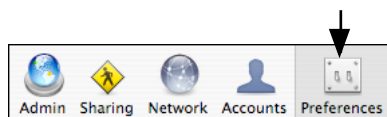
If *WorkGroup Manager* is not installed on any workstations, you will need to drag a copy of *Firefox* to the **Applications** folder on the server, then use *WorkGroup Manager* on the server to carry out the following procedures.

8.3. Click on the **Groups** button, and select the groups whose **Docks** you are going to alter.

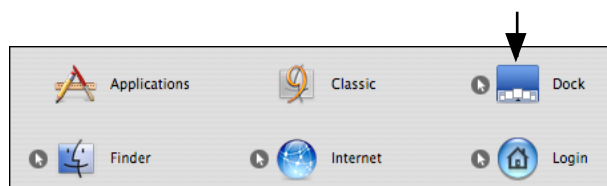


If your groups have different preferences from one another you will need to select the groups individually.

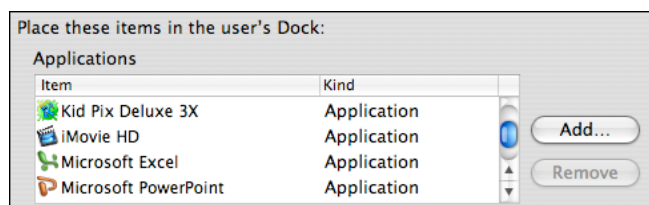
8.4. Click on the **Preferences** icon at the top of the *WGM* window.



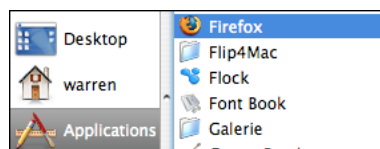
8.5. Click on the **Dock** icon in the right side of the window.



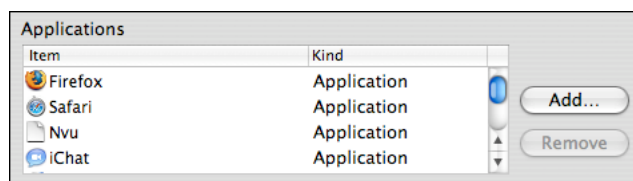
8.6. Click on the **Add** button



8.7. Navigate to the **Applications** folder on the local hard disk, select *Firefox*, and click on the **Add** button.



8.8. The *Firefox* application will now be added to the items available in the **Dock** of each member of the Group.



8.9. You may also choose to remove *Safari* from the available items in the **Dock**, if *Firefox* is the only browser to be used.

8.10. Click on the **Apply Now** button to save the changes.

8.11. Quit *WorkGroup Manager*.

Login as a managed user to check that the changes you have made have been applied.